



# Buckhead Incident Decision

Published  
08/11/12 13:23

## Table of Contents

1. Decision.....	2
1.1. Decision Summary .....	2
1.2. Assessment.....	3
1.2.1. Incident Information.....	3
1.2.1.1. Content.....	3
1.2.2. Weather.....	4
1.2.2.1. Content.....	4
1.2.3. Content.....	6
1.3. Objectives.....	9
1.3.1. Content.....	9
1.4. Course of Action.....	11
1.4.1. Content.....	11
1.5. Validation.....	14
1.5.1. Content.....	14
1.6. Rationale.....	16
1.6.1. Content.....	16

# 1. Decision

## 1.1. Decision Summary

### Decision Information

NAME	VALUE
Published	08/11/2012 13:23 CDT
Estimated Cost	\$40,505
Incident Owner (s)	Steve Hamilton, Duane Bishop, D'Lynn Williams, John Dixon, Terry Godin, Molly Juillerat, Mei Lin Lantz, Bonny Hammons, Terry Baker
Editor(s)	
Reviewer(s)	
Approver(s)	Terry Baker
Natl Preparedness Level	4

### Decision History

Editor Name	Action	Date (CDT)	Comment
Baker, Terry	Published	08/11/2012 13:23	
Baker, Terry	Approved	08/11/2012 13:23	
Juillerat, Molly	Review Requested	08/11/2012 13:19	
Juillerat, Molly	Review Requested	08/11/2012 13:18	
Williams, D'Lynn	Created	08/08/2012 17:06	

## 1.2. Assessment

### 1.2.1. Incident Information

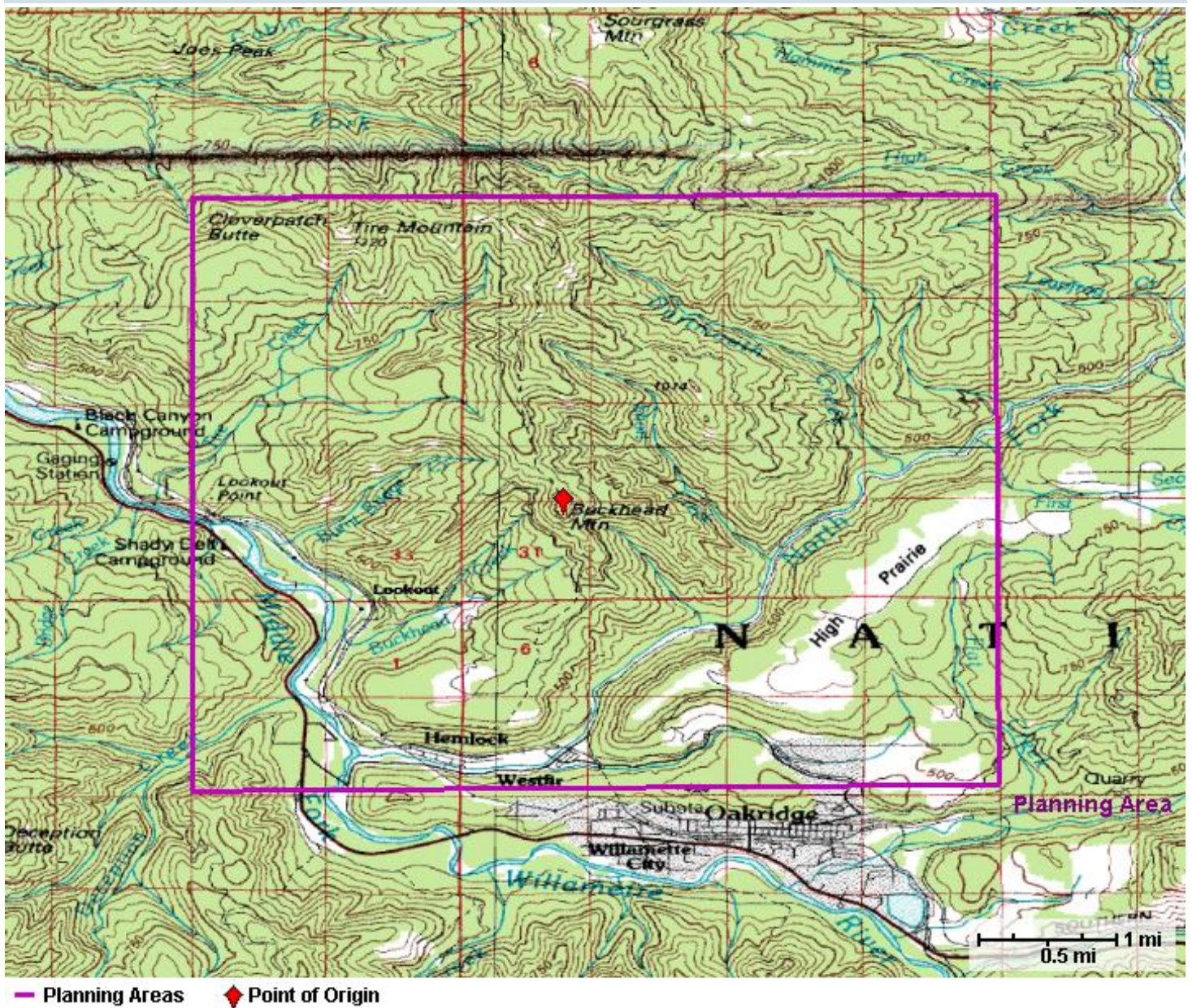
#### 1.2.1.1. Content

##### Incident Information

NAME	VALUE
Incident Name	Buckhead
Unique Fire Identifier	2012-ORWIF-000056
Responsible Unit Name	Willamette National Forest
FireCode	
Incident Size	20 acres
Incident Cause	Natural
Incident Discovery	08/06/2012 08:38
Contained	
Controlled	
Out	
Jurisdictional Unit	ORWIF - Willamette National Forest
Jurisdictional Agency(s)	USFS
Geographic Area	Northwest
Point of Origin	43.7932 N / 122.4937 W
Owner Name(s)	Steve Hamilton, Duane Bishop, D'Lynn Williams, John Dixon, Terry Godin, Molly Juillerat, Mei Lin Lantz, Bonny Hammons, Terry Baker
Nationally Significant	No



## Incident Map



### 1.2.2. Weather

#### 1.2.2.1. Content

#### Fire Weather Zone Forecast

000  
FNUS56 KPQR 111528  
FWFPQR

FIRE WEATHER PLANNING FORECAST FOR NW OREGON AND SW WASHINGTON  
NATIONAL WEATHER SERVICE PORTLAND OR  
825 AM PDT SAT AUG 11 2012

...WARMER THIS WEEKEND...  
...POTENTIAL HAINES 6 EVENT MID TO LATE NEXT WEEK...

.BROADCAST DISCUSSION...HIGH PRESSURE ALOFT WILL STRENGTHEN A BIT  
THIS...REDUCING THE ONSHORE COMPONENT AND RESULTING IN SLIGHTLY  
ABOVE AVERAGE DAYTIME TEMPERATURES. THE ONSHORE REGIME CONTINUES THE

## Fire Weather Zone Forecast

---

FIRST HALF OF NEXT WEEK. LONGER RANGE MODELS ARE HINTING AT A DRY AND UNSTABLE (HAINES 6) PATTERN MID TO LATE NEXT WEEK.

.DISCUSSION...EXPECT A GRADUAL WARMING TREND THIS WEEKEND AS HIGH PRESSURE ALOFT STRENGTHENS AND THE ONSHORE COMPONENT WEAKENS. THERE WILL BE AREAS OF DAYTIME HUMIDITY AT OR BELOW 25 PERCENT THIS WEEKEND...ESPECIALLY ABOVE 5000 FEET. THE SOUTH PORTION OF ZONE 608 COULD BE INFLUENCED BY A THERMAL TROUGH PASSAGE SUNDAY AFTERNOON... WHICH WOULD IMPACT ONGOING FIRES IN THAT AREA. THIS THERMAL TROUGH PASSAGE WILL MAINLY AFFECT SOUTHWEST OREGON. ONSHORE LOW-LEVEL FLOW RETURNS THE FIRST HALF OF NEXT WEEK...WITH THE STRONGEST MARINE INFLUENCE OCCURRING TUESDAY. LONGER RANGE MODELS ARE COMING INTO BETTER AGREEMENT FOR THE LATTER HALF OF NEXT WEEK. A STRONG UPPER RIDGE WILL BE CENTERED OVER THE PACIFIC NORTHWEST THURSDAY. A MORE PRONOUNCED THERMAL TROUGH DEVELOPS ALONG THE COAST WEDNESDAY NIGHT...THEN SHIFTS TO THE INLAND VALLEYS THURSDAY. THERE ARE STILL QUESTIONS AS TO THE STRENGTH OF THE THERMAL TROUGH...ITS LOCATION AND IF ANY OFF-SHORE COMPONENT DEVELOPS. NONETHELESS... THERE IS THE POTENTIAL FOR CRITICAL FIRE WEATHER CONDITIONS TO OCCUR...PRIMARILY MID AND HIGH LEVEL HAINES 6 CONDITIONS.

\$\$

MID LEVEL HAINES INDEX THIS MORNING...

SALEM 5 MEDFORD 4

HIGH LEVEL HAINES INDEX THIS MORNING...

SALEM 5 MEDFORD 4 BOISE 4 SPOKANE 2

NWCC DRYNESS LEVELS YESTERDAY (FRIDAY)...

W2 YELLOW W3 YELLOW W4 YELLOW

CHANCE OF WETTING RAIN (CWR) 0.25 INCHES OR GREATER.  
FORECAST WINDS ARE 10 MINUTE AVERAGES 20 FT ABOVE VEGETATION.  
THUNDERSTORMS IMPLY GUSTY AND ERRATIC WINDS.

\$\$

ORZ606-608-120115-

AREA 4...CENTRAL OREGON CASCADE FOOTHILLS 606

AREA 4...CENTRAL OREGON CASCADES 608

825 AM PDT SAT AUG 11 2012

.TODAY...

\* SKY/WEATHER.....SUNNY.

\* MAX TEMPERATURE.....80S TO LOWER 90S...BUT 75 TO 80 AT  
PASS LEVEL.

\* MIN HUMIDITY.....20-30 PERCENT...BUT TO 15 PERCENT  
FAR SOUTH AND EXPOSED RIDGES.

\* 20-FOOT WINDS.....

\* VALLEYS/LWR SLOPES...EAST TO 3 MPH INCREASING TO UP-SLOPE  
OR UP-VALLEY 3-7 MPH IN THE  
AFTERNOON.

\* RIDGES/UPR SLOPES.....NORTHEAST 2-6 MPH INCREASING TO NORTH 5-8  
MPH IN THE AFTERNOON.

\* CWR.....ZERO.

\* HAINES INDEX (HIGH).....5 (MODERATE).

\* HAINES INDEX (MID).....5 (MODERATE).

\* LAL.....1.

.TONIGHT...

\* SKY/WEATHER.....CLEAR.

\* MIN TEMPERATURE.....55 TO 65...BUT 45 TO 55 ELEVATED



# Fire Weather Zone Forecast

## VALLEYS.

- \* MAX HUMIDITY.....65-85 PERCENT BUT 50-65 PERCENT MID/UPPER SLOPES AND DOWN TO 30 PERCENT RIDGES ABOVE 6000 FEET.
- \* 20-FOOT WINDS.....
- \* VALLEYS/LWR SLOPES....UP-SLOPE OR UP-VALLEY 3-7 MPH EARLY THEN LOCAL DRAINAGE TO 3 MPH.
- \* RIDGES/UPR SLOPES....NORTH 5-8 MPH BECOMING EAST TO 4 MPH OVERNIGHT.
- \* CWR.....ZERO.
- \* HAINES INDEX (HIGH).....5 (MODERATE).
- \* HAINES INDEX (MID).....5 (MODERATE).
- \* LAL.....1.

## .SUNDAY...

- \* SKY/WEATHER.....SUNNY.
- \* MAX TEMPERATURE.....85 TO 95...BUT 80 TO 85 AT PASS LEVEL.
- \* MIN HUMIDITY.....20-30 PERCENT...BUT TEENS FAR SOUTH AND RIDGES ABOVE 6000 FEET.
- \* 20-FOOT WINDS.....
- \* VALLEYS/LWR SLOPES....UP-SLOPE 2-6 MPH.
- \* RIDGES/UPR SLOPES....EAST TO 4 MPH INCREASING TO NORTHWEST 5-8 MPH IN THE AFTERNOON.
- \* CWR.....ZERO.
- \* HAINES INDEX (HIGH).....5 (MODERATE).
- \* HAINES INDEX (MID).....5 (MODERATE).
- \* LAL.....1.

## .EXTENDED...

- .SUNDAY NIGHT...MOSTLY CLEAR. LOWS 48 TO 58.
- .MONDAY...SUNNY. HIGHS 80 TO 90...BUT 75 TO 80 AT PASS LEVEL. MINIMUM RH 20 TO 35 PERCENT. WEST TO NORTHWEST WIND TO 10 MPH.
- .MONDAY NIGHT...MOSTLY CLEAR. AREAS OF LOW CLOUDS FOOTHILLS AND LOWER SLOPES. LOWS 45 TO 55.
- .TUESDAY...MORNING CLOUDS FOOTHILLS AND LOWER SLOPES OTHERWISE SUNNY. HIGHS 73 TO 83 BUT 67 TO 72 AT PASS LEVEL. MINIMUM RH 25 TO 45 PERCENT. WEST TO NORTHWEST WIND AROUND 5 MPH.
- .TUESDAY NIGHT...CLEAR. LOWS 45 TO 55.
- .WEDNESDAY...SUNNY. HIGHS IN THE 80S TO LOWER 90S...BUT 75 TO 80 AT PASS LEVEL. MINIMUM RH 15 TO 30 PERCENT. TERRAIN-DRIVEN WIND LESS THAN 10 MPH.

&&

	TEMPERATURE		/	HUMIDITY		
YELLOWSTN	89	63	91 / 25	50	22	
TROUT CRK	90	59	92 / 29	66	28	
PEBBLE	87	52	91 / 22	82	18	
FIELDS	88	58	92 / 23	62	21	
EMIGRANT	91	62	94 / 18	48	15	

\$\$

WEISHAAR

WEATHER.GOV/PORTLAND

### 1.2.3. Content

NAME	VALUE
Planning Area Name	08/11/2012 13:23

Incident Name	Buckhead
Planning Area Size	22,343 acres

Values List

Category	Value	Data Source	Currency	Coverage
Building Clusters: Lane, OR	346	US Counties / FGDC Cadastral Subcomm.		Available counties
Communication Towers	5	FCC	02/22/2012	National
County: Lane, OR	22,343 acres	HSIP 2011, US Census Bureau TIGER data	07/01/2010	National
Electric Transmission Lines	4.7 miles	HSIP	11/2011	National
Habitat: Northern spotted owl	1,161 acres	FWS Geospatial Services	02/01/2012	National
Habitat: Oregon chub	12 acres	FWS Geospatial Services	02/01/2012	National
Jurisdictional Agency: USFS	18,625 acres	Various	08/08/2011	National
Natl Scenic Byways	5.1 miles	Various	varies by data source	National
Particulates Non- Attainment	3,533 acres	EPA	2009	National
Roads	8.5 miles	ESRI Data and Maps 2010	2010	National
USFS Buildings	64	USFS-INFRA	02/23/2012	National

Currency/Coverage of Values Queried that Produced No Results

Category	Data Source	Currency	Coverage
BLM Buildings	GeoCommunicator / Other Sources	07/21/2010	BLM Lands
BLM Horse and Burro	BLM/NOC	07/17/2011	OR, ID, MT, CA, NV, UT, WY, CO, AZ, NM
BLM Oil / Gas Leases	BLM/NOC	06/04/2012	Western United States
BLM Range Allotments	BLM State offices (compiled by BLM NOC)	06/26/2012	Western United States
Campgrounds	BLM (Geocommunicator), USFS (INFRA)	BLM 07/21/10; USFS 02/23/12	National (BLM and USFS only)
Class 1 Airsheds	NPS Air Resources Division	Various	National
Electric Power Plants	HSIP	11/2011	National
Electric Sub Stations	HSIP	11/2011	National
IRA	Various		National
Mines	HSIP	11/2011	National

Currency/Coverage of Values Queried that Produced No Results

Category	Data Source	Currency	Coverage
NPS Buildings	NPS (NISC - Resource Information Services Division)	06/12/2012	National (incomplete)
NRA	Various	09/15/2011	National
Natl Historic Trails	Various	varies by data source	National
Natl Recreation Trails	Various	varies by data source	National
Natl Scenic Trails	NPS, USFWS, USFS	05/04/2012	National
Oil and Gas Pipelines	HSIP	11/2011	National
Other Areas	Various	varies by data source	National
Ozone Non-Attainment	EPA	2009	National
Responsible Agency	Various	07/13/2011	AK, CA, ID, MT, NM
Retardant Avoidance	USFS Data Warehouse	12/2011	National (USFS Units only)
Sage Grouse General Habitat	BLM/NOC	05/2012	Regional - OR, WA, ID, MT, ND, SD, NV, UT, CO, CA, WY
Sage Grouse Priority Habitat	BLM/NOC	05/2012	Regional - OR, WA, ID, MT, ND, SD, NV, UT, CO, CA, WY
TNC Lands	The Nature Conservancy	02/21/2012	National
USFWS Trails	FWS	varies by data source	National
WSA	Various	04/07/10	National
Wilderness	Various	03/12/2012	National



## 1.3. Objectives

### 1.3.1. Content

#### Incident FMU List

Unit	FMU	Acres
ORWIF	FMU01 - General Forest	18,264.4

#### Incident Objective List

Active	Inactive	Incident Objective
08/11/2012		<ol style="list-style-type: none"><li>1) First and for most, provide for Firefighter and Public Safety.<ul style="list-style-type: none"><li>• Implement an Closure Order that includes road 5828 and Alpine trail 3450 within the Planning Area.</li><li>• Restrict access to dispersed recreation sites near dip site locations.</li><li>• Communicate with ODOT about visibility and public safety along Hwy 58.</li></ul></li><li>2) Confine the fire mostly to the Buckhead Ridge area.<ul style="list-style-type: none"><li>• Contain fire on the east and south at road 5828687</li><li>• Contain fire on the west at road 5828.</li><li>• Contain fire on the north at the saddle NW/SE Section 30, the saddle north of Buckhead Point.</li></ul></li><li>3) Minimize impacts to natural and cultural resources.<ul style="list-style-type: none"><li>• Use MIST tactics to minimize suppression-related disturbance to Peregrine Management Area.</li><li>• Protect Buckhead shelter to the north of the fire.</li><li>• Minimize impacts to cultural resources on Buckhead Mountain.</li><li>• Follow mitigation measures for dipsite locations.</li></ul></li><li>4) Provide the public with accurate and timely information about the fire.<ul style="list-style-type: none"><li>• Maintain communication about trail closures with local mountain cycling community.</li></ul></li></ol>

#### Incident Requirement List

There are no Incident Requirements.

#### Strategic Objective List

Unit/FMU	Active	Strategic Objective
ORWIF/FMU01	08/04/2009	Confine or contain wildfires at the smallest possible size.
ORWIF/FMU01	08/04/2009	Protect structures.
ORWIF/FMU01	08/04/2009	Control wildfires at the smallest possible size.

#### Management Requirement List

Unit/FMU	Active	Management Requirement
ORWIF/ FMU01	08/04/2009	Human life; firefighter and public safety are the highest priority and will determine all suppression actions.

## Management Requirement List

Unit/FMU	Active	Management Requirement
ORWIF/ FMU01	08/04/2009	Avoid the use of fire retardant or other chemical agents within 300 feet slope distance of rivers, lakes, creeks, other wetlands and domestic water sources.
ORWIF/ FMU01	08/04/2009	H.J. Andres Experimental Forest: <ul style="list-style-type: none"> <li>• Do not use fire retardants/chemical agents within "Monitored" watersheds. Avoid the use of fire retardants/chemical agents in all other areas of H.J. Andrews.</li> <li>• Limit suppression impacts to all research plots.</li> <li>• Contact H.J. Andrews personnel before the use of mechanized equipment.</li> </ul>
ORWIF/ FMU01	08/04/2009	Long Term Ecosystem Productivity (LTEP) study area: <ul style="list-style-type: none"> <li>• Do not use fire retardant/chemical agents within study units.</li> <li>• Utilize ridge road (585D5C), trails to units 5, 8, 9 and creeks were possible for control lines.</li> </ul>
ORWIF/ FMU01	08/04/2009	Late Sucessional Reserve (LSR): <ul style="list-style-type: none"> <li>• Minimize suppression damage in LSR's</li> <li>• Avoid draw down of creek and river pools during low flow</li> <li>• Consider rapidly extinguishing smoldering coarse woody debris and duff.</li> <li>• Minimize the building of any new roads or the widening of existing roads.</li> <li>• Include construction of water bars on all control lines, roads, and hand fire lines.</li> <li>• Locate fire camps, spike camps, staging areas, helispots and other centers of activity outside of riparian areas, T&amp;E and riparian areas.</li> <li>• Locate and manage water-drafting sites to minimize adverse effect on riparian habitat and water quality.</li> </ul>
ORWIF/ FMU01	08/04/2009	Minimize smoke impacts to air quality, to the degree possible.

## 1.4. Course of Action

### 1.4.1. Content

#### Estimated Cost

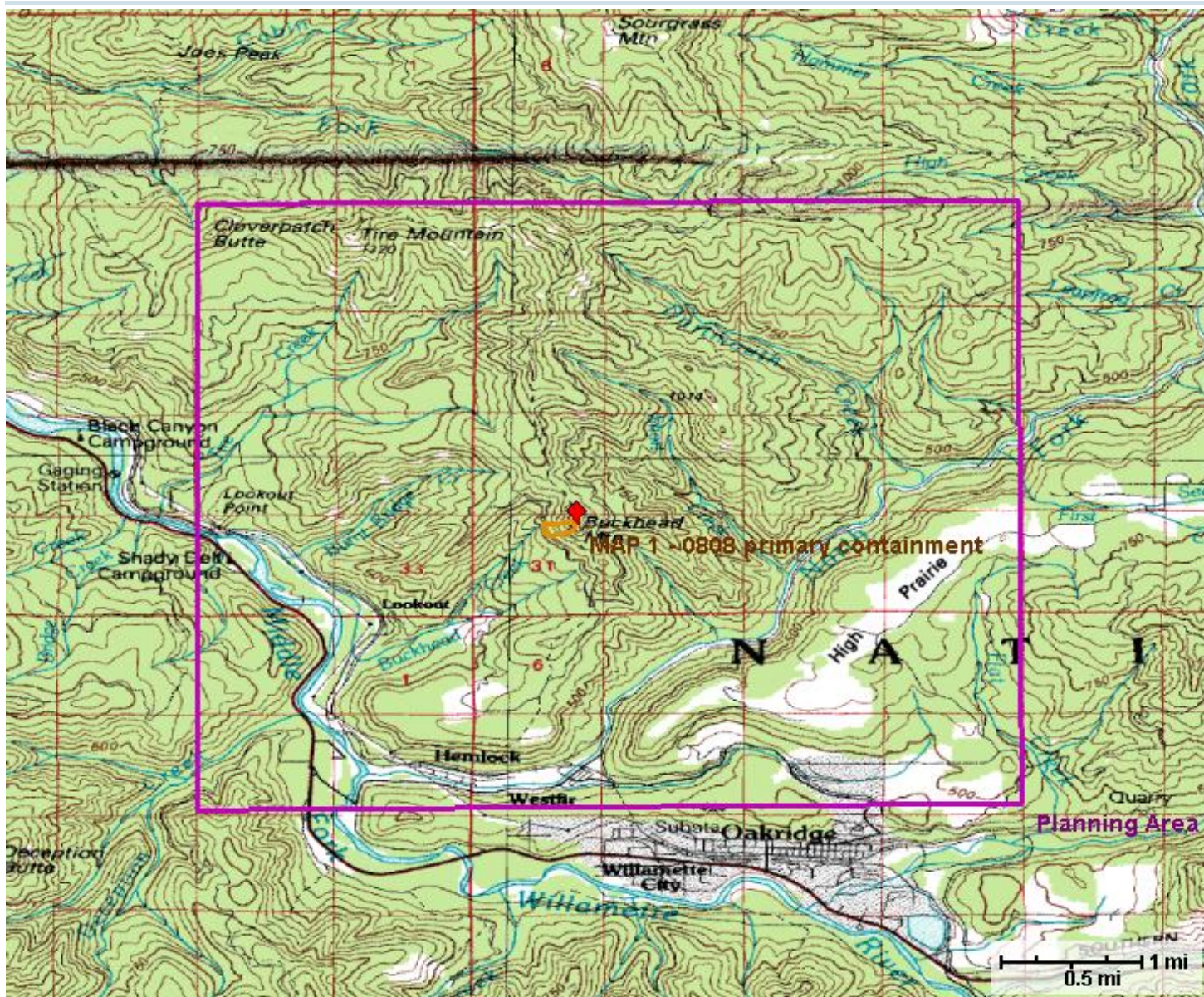
NAME	VALUE
Estimated Cost	\$40,505
Method(s) Used	Spreadsheet

#### Course of Action

Active	Inactive	Action Item
08/11/2012		Follow the planned initial response.
08/11/2012		Monitor the incident.
08/11/2012		Use MIST tactics to minimize suppression-related disturbance to Peregrine Management Area.
08/11/2012		To protect Buckhead shelter, maintain fire within the fire containment area.
08/11/2012		Keep fireline away from historical lookout. Protect site as needed if fire threatens structure
08/11/2012		Hover the aircraft over the site prior to extracting water.
08/11/2012		Keep the Public Affairs Officer (PAO) updated with consistent messages and actions.
08/11/2012		Assign resources as dip site managers.
08/11/2012		Minimize the introduction and spread of invasive species.
08/11/2012		Issue a public notice and sign the closure areas.



Management Action Points Map Image



— Planning Areas     
 ◆ Point of Origin     
 — Mgmt Action Points

**Management Action Point 1**

NAME	VALUE
Incident Name	Buckhead
Cost	\$29,489
Shape	0808 primary containment
Activated	08/11/2012
Deactivated	

**Condition**

implement unless weather conditions worsen

## Management Action Point 1

---

### Actions

- Contain fire on the east and south at road 5828687
- Contain fire on the west at road 5828.
- Contain fire on the north at the saddle NW/SE Section 30, the saddle north of Buckhead Point

### Resources

2 water tenders, 2 T2 contract crews, 2 T3 engines fed, 2 fallers, 1 FB, 1 EMT, 1 IC, 1 SO, 1 DIVS.



## 1.5. Validation

### 1.5.1. Content

#### Validation History

Date (CDT)	User	Action	Comments
08/08/2012 16:57	Williams, D'Lynn	Strategic Objectives Being Satisfied	more resources ordered
08/08/2012 17:00	Williams, D'Lynn	Strategic Objectives Not Being Satisfied	
08/08/2012 17:01	Williams, D'Lynn	Incident and Strategic Objectives Being Satisfied	
08/08/2012 17:04	Williams, D'Lynn	Incident and Strategic Objectives Being Satisfied	
08/08/2012 17:06	Williams, D'Lynn	Decision created	
08/11/2012 13:13	Juillerat, Molly	The proposed Course of Action will satisfy the Objectives	
08/11/2012 13:13	Juillerat, Molly	The proposed Course of Action will satisfy the Objectives	
08/11/2012 13:13	Juillerat, Molly	The proposed Course of Action will satisfy the Objectives	
08/11/2012 13:13	Juillerat, Molly	The proposed Course of Action will satisfy the Objectives	
08/11/2012 13:13	Juillerat, Molly	The proposed Course of Action will satisfy the Objectives	
08/11/2012 13:13	Juillerat, Molly	The proposed Course of Action will satisfy the Objectives	
08/11/2012 13:13	Juillerat, Molly	The proposed Course of Action will satisfy the Objectives	
08/11/2012 13:13	Juillerat, Molly	The proposed Course of Action will satisfy the Objectives	
08/11/2012 13:13	Juillerat, Molly	The proposed Course of Action will satisfy the Objectives	

#### Relative Risk

NAME	VALUE
Relative Risk	High
Duration	Medium
Saved By	Williams, D'Lynn
Completed	08/10/2012 17:17 CDT

#### Relative Risk Notes

Burn out conducted on 8/8/2012, with current weather conditions, and with current staffing; the Potential Fire Duration is expected to be less than 2 weeks.

## **Hazards Notes**

Fire behavior: single and group torching Potential size: estimated at 200+ acres Departure from Historic: FRCC2

## **Values Notes**

Resources values: impacts may affect dispersed campsites, 2 seed orchards, Road 19, Westfir, railroad, covered bridge, 4 trails, peregrine falcon and spotted owl nest sites, spotted owl critical habitat, munipule watershed, listed fish habitat, private land on SE side of North Fork, commercial timber sales including Outlook planning area; communication tower; utility/BPA lines Low Risk areas: Westridge community; Deception Creek trailer park; Shady Dell campground; Highway 58; Middle Fork R.D. compound Location: most are w/in 1.5 miles Social/Political: public concerns, public use of Road 19, air quality in Westfir

## **Probability Notes**

Barriers: fairly continuous fuels but with numerous roads (on 3 sides) in close proximity to current fire perimeter. Seasonal Severity: ERC at 48 (average) on 8/8/2012 - 70th percentile

## **1.6. Rationale**

### **1.6.1. Content**

Rationale August 9, 2012 Buckhead 2012-ORWIF-000056

The rationale for my decision is based on Strategic Risk assessment in which values at risk, firefighter exposure to hazards, likelihood of success and costs were carefully considered.

The suppression strategy we have selected calls for both direct and indirect perimeter control and point protection in order to mitigate the risk to firefighters in high exposure areas. The selected course of action offers the greatest likelihood of a beneficial outcome while minimizing risk exposure to the firefighters.

Providing for firefighter and public safety is always the number one priority. There is no loss of infrastructure or damage to property or resources that is more important than providing for firefighter and public safety. Using indirect and point protection tactics to keep the fire east of Rd. 5828, north and west of Rd. 5828687, and south of Rd. 1910683. This tactic will keep the fire off of private and developed land and provide for firefighter and public safety and prevent the loss of infrastructure and private property.

The planning area of the fire is within and adjacent to the cities of Westfir and Oakridge and outlying neighborhoods, Oregon Highway 58, Union Pacific railroad lines, The Middle Fork Ranger District office, Buckhead and Westfir Seed Orchards, and popular hiking/biking trails. Closures are in effect to protect potential users from entering areas where fire hazards exist including Roads 5828, 1910, and Alpine Trail #3450. A peregrine falcon nest area is inside the fire perimeter and Minimal Impact Suppression Tactics (MIST) will be used within this area to allow fire to play its natural ecological role.

Based on modeling runs, current and expected weather and fire behavior, the courses of action developed should meet the objectives of the incident. Values at risk, natural, social, and economic, the safety of public, cooperators and stakeholders as well as the suppression resources have been addressed. The plan provides for expansion / contraction of suppression resources in response to fire behavior, and threats to values at risk, with consideration of cost containment measures.

Providing accurate and timely information about the fire to all of the emergency service cooperators, landowners, and the public will help the surrounding communities and visitors stay informed of the facts about the fire, make informed decisions while the fire is being managed, and minimize the disruptions caused by inaccurate rumors. We may also use this as an opportunity to educate the public on the importance of risk assessment in relationship to firefighter safety.

I believe my decision has the highest likelihood of success for meeting incident objectives, especially firefighter safety and allows for pre-planning. Incident cost is commensurate with incident complexity. The option of going more direct on the fire to minimize the size of the fire has a low likelihood of success, exposes firefighters to much greater safety hazards, and potentially involves a greater amount of firefighting resources and costs.

### **Strategic Risk Assessment (SRA)**

**Buckhead Fire ORWIF-000056**

**Middle Fork Ranger District**

**USDA Forest Service**

### **Current Incident Summary**

The Buckhead Fire is currently about 60 acres. The fire is currently located on the Middle Fork Ranger District of the Willamette National Forest. Included in the analysis area are Scenic Views and General Forest land allocations. On the Willamette National Forest; land allocations included in the

planning area include riparian reserves, a recreation segment of a Wild and Scenic River, Late Successional Reserves, critical owl habitat, developed recreation and administrative sites.

Above average spring, and early summer moisture has resulted in a delayed fire season and high live fuel moistures. Firefighter safety concerns in this area include: snags, steep, rocky ground, rolling debris, poison oak, bees, very poor access, heavy fuel loadings that could result in potential extreme fire behavior during east wind events. If the fire experiences east wind events, rates of spread will increase to extreme levels on the westerly slopes of the Cascade Range and could compromise containment lines, escape routes and safety zones.

## **Risk Assessment**

### **Values at Risk:**

Values at risk are private lands (including the community of Westfir) to the south of the fire, railroad, communication tower, seed orchards, and power lines. Other resources include the Alpine trail, the historic Buckhead shelter, a peregrine falcon nesting area, Chinook salmon in the North Fork Middle Fork, and Oregon chub. Fire suppression resources need to be mindful of rates of spread compounded by wind and slope alignments.

### **Probability of Harm and Consequences to Values at Risk:**

Fire spread is most likely to occur north and east under westerly wind patterns. Extreme fire behavior can be expected on the west side of the Cascade Range under anticipated fall easterly wind events. Roads and indirect hand lines are being used as containment lines to safely work around steep terrain, heavy fuel loading and rolling debris. The Values at Risk are analyzed by building the "box" big enough to anticipate fire growth. The failure to analyze a big enough area has compromised many an IC's ability to effectively develop successful operational strategies to contain spread.

Potential consequences to Values at Risk are negative impacts to the community of Westfir, railroad, power line operations, communication towers and natural resources.

### **Potential Benefits:**

Current fire behavior is moderate resulting in a beneficial underburn for natural resources and reduced fuel loading in the fire area.

The current strategic direction allows for an acceptable level of risk to firefighters as well as social and ecological risk.

## **Risk Analysis**

Two alternatives were developed based on the incident objectives of providing for firefighter and public safety, protecting private land and infrastructure, minimizing fire suppression related resource damage, and negative impacts to natural resources.

**Alternative 1:** A combination of direct and indirect perimeter control incorporating burn out operations in areas of unburned fuels.

**Alternative 1 Rationale:** This alternative minimizes firefighter exposure to the hazards in the area with consideration to the values at risk on forest lands protected by the Willamette National Forest. It takes advantage of the existing road infrastructure, moderate fire behavior, and predicted weather to contain fire spread.

**Alternative 2:** Direct and parallel fire line containment of the fire spread.

**Alternative 2 Rationale:** Direct and parallel line allows the fire to be contained at a smaller size. This strategy requires extensive fire fighter exposure on steep terrain that could expose fire fighters to potential fire below the line. Exposure to hazards from heavy fuels and excessive overhead hazard (snags) is also a risk of this alternative. The success of holding containment lines with this alternative is low due to rolling debris, fuel type and continuity, minimal escape routes and safety zones.

### **Risk Communication**

We have established communications with the following groups and agencies; The Greater Oakridge Trail Stewards, Oregon Adventures, Oregon Department of Forestry, the Army Corps of Engineers, cities of Westfir and Oakridge, Oregon Department of Transportation, the Federal Aviation Administration. Pre-season agreements and protection responsibilities are known and communicated annually amongst participating agencies and forests.

### **Risk Sharing**

The Buckhead Incident Commander is working closely with the Willamette National Forest, Oregon Department of Forestry, line officers, fire staffs, and the regional office to develop suppression strategies that reduce the risk to firefighters and resources. Some of this information was used to develop the WFDSS. Additional resource information was used to validate suppression objectives.

### **Risk Decision**

#### **Decision:**

Alternative 1 was chosen as the preferred alternative.

#### **Findings:**

- The selected course of action limits firefighter exposure and encourages use of natural features (saddles, ridges and rocky outcroppings) and roads to the south, east and west of the Buckhead Incident. These control measures will include; burnout and holding with sprinklers and hose lays.
- The selected course of action offers the greatest likelihood of a beneficial outcome while minimizing exposure to firefighters and protection of values of risk.

#### **Commitment:**

This SRA was developed to assess, plan for and manage the Buckhead Incident. This assessment provides the Agency Administrator with a quick but comprehensive assessment of the relative risk of the fire.

### **Risk Monitoring**

As this Incident develops, I will monitor the effectiveness of the course of action with the IMT. If conditions warrant, the risk assessment, analysis and risk decision will be revised as needed.

8/10/2012