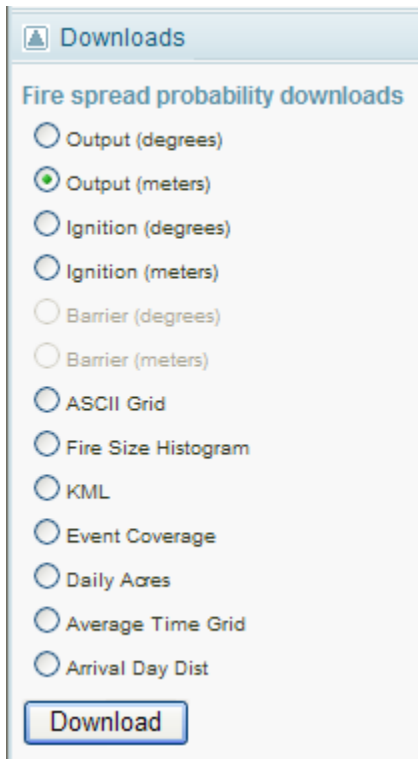


Downloading FSPRO output data from WFDSS to display in ArcMap.

- In WFDSS select the analysis you wish to download data for and select the “Result” button.



- Select the “Results” tab. In the box on the left you can scroll down and see what is available to download, ie. “Output” or “Ignition” (Perimeter) shapefiles or a Google kml file that has Output, Ignition and a color legend combined.
- Select the item you want and click the “Download” button. Browse to your folder of choice and save the zip file.

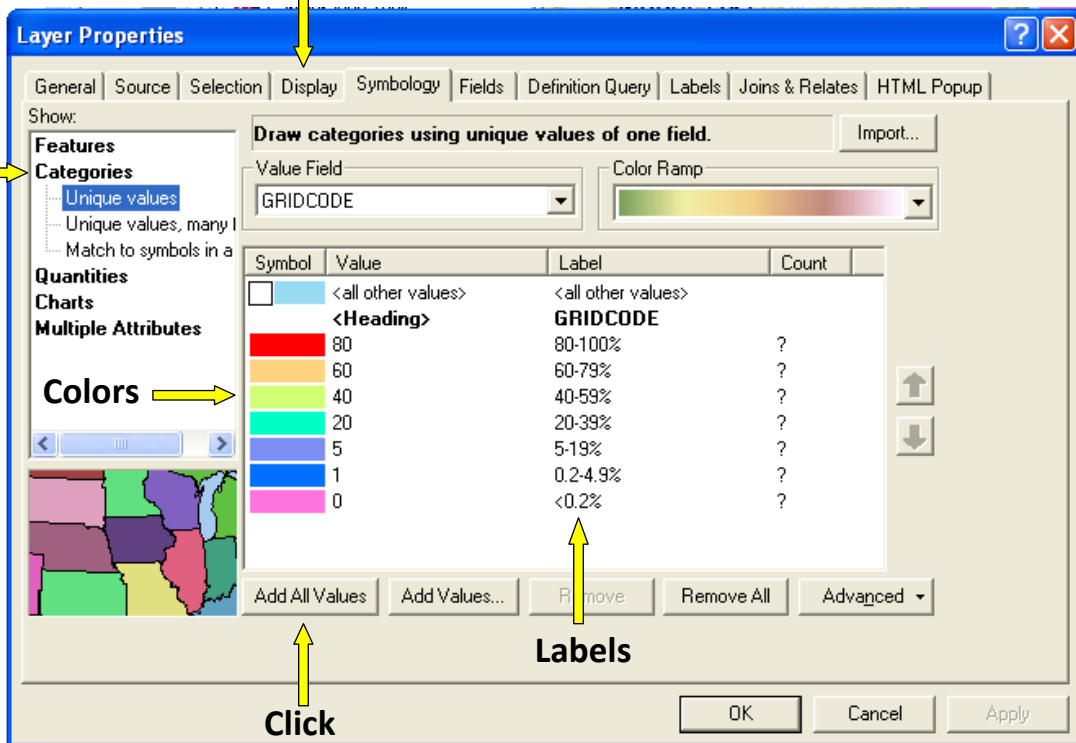


- Extract the shapefile parts to the folder of your choice preferably named with the analysis. The shapefiles are named with an analysis number and may not be very descriptive.
- To bring the files into an ArcMap, just click on “Add Data”. Browse to where you extracted the shapefile and add it to your map.
- To display the output like the WFDSS Google map, right click on the shapefile and go to “Properties”. Select the “Symbology” tab.
- In the left window select “Categories” and “Unique values” under that.
- For the “Value Field” use the drop-down and select “GRIDCODE” and then click the “Add All Values” button towards the bottom. Take the check off of the <all other values>.
- You can double click each color and change them to match the typical WFDSS Google maps. In the Label area you can label the GRIDCODE value so the Legend in the map and Table of Contents will show Percentage Values. Below is a list of color values used in this example to look like the WFDSS output maps.

You will also want to go to the display tab and use a value of 40% for the Transparent box.

40% Transparent

Choose
This



Click
This

ArcMap Colors used for this example:

- 80-100%: Mars Red
- 60-79%: Mango
- 40-59%: Lemongrass
- 20-39%: Tourmaline Green
- 5-19%: Medium Azure
- 0.2-4.9%: Cretean Blue
- < 0.2%: Fushia Pink